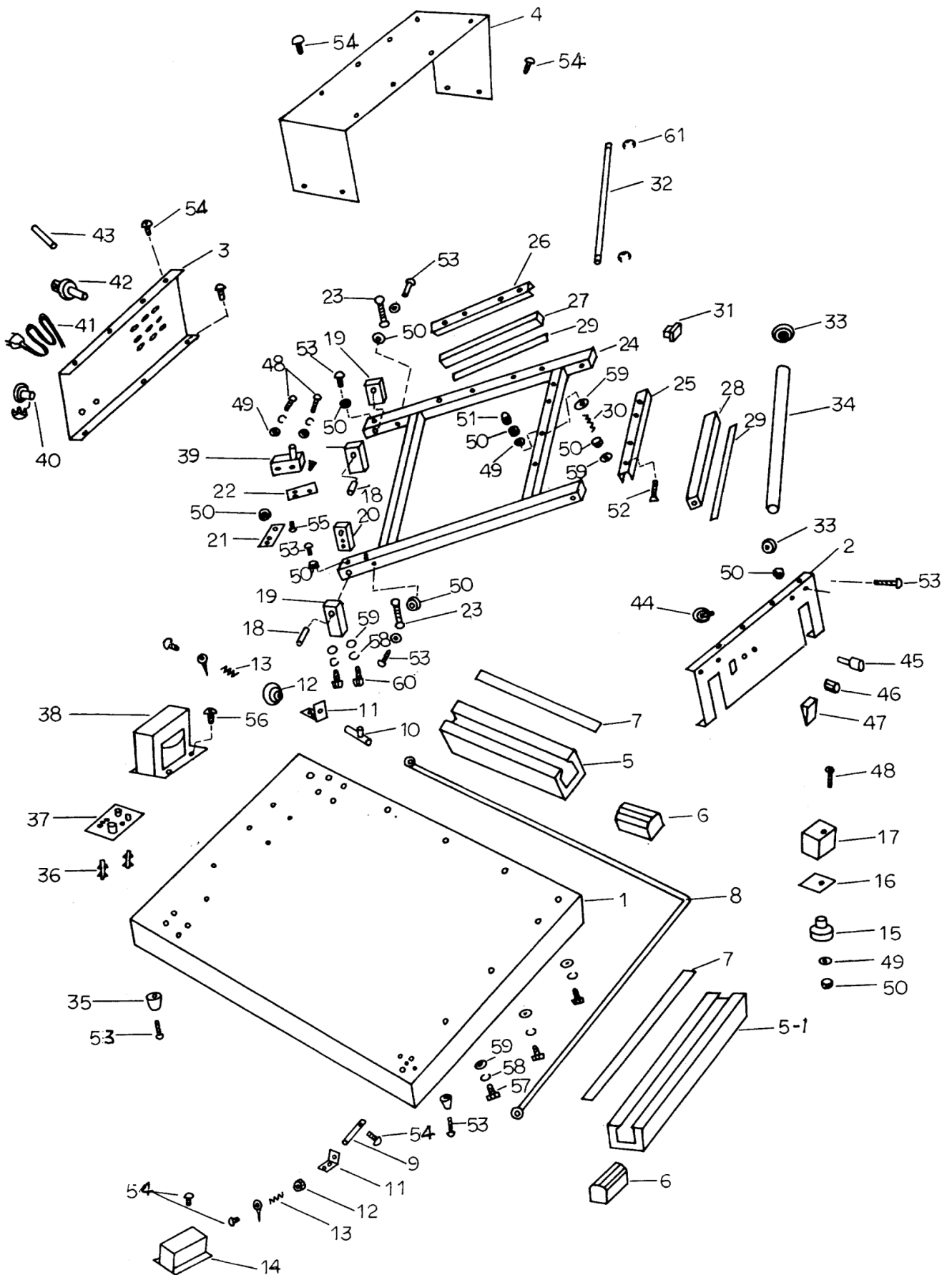


YC450HL L - SEALER PARTS LIST



YC-HL L-TYPE MACHINE

CODE NO	PARTS NO	PARTS NAME	Q'TY	CODE NO	PARTS NO	PARTS NAME	Q'TY
1	HL-01	Bracket 4545	1	26	HL-18	Silicon Bracket 450 mm 4545 & 4560	1
	HL-01A	Bracket 3045	1		HL-18A	Silicon Bracket 300 mm 3045	1
	HL-01B	Bracket 4560	1		HL-18B	Silicon Bracket 600 mm 6080	1
	HL-01C	Bracket 6080	1	27	HL-19A	Silicon Rubber 300 mm 3045	1
2	HL-02	Control Plate 3045 & 4545	1		HL-19D	Silicon Rubber 450 mm 4545 & 4560	1
	HL-02B	Control Plate 4560	1		HL-19E	Silicon Rubber 600 mm 6080	1
	HL-02C	Control Plate 6080	1	28	HL-19	Silicon Rubber 460 mm 3045 & 4545	1
3	HL-03	Rear Plate 3045 & 4545	1		HL-19F	Silicon Rubber 610 mm 4560	1
	HL-03B	Rear Plate 4560	1		HL-19C	Silicon Rubber 810 mm 6080	1
	HL-03C	Rear Plate 6080	1	29	F-09	Flame Retardant 13 mm	1 Rol.
4	HL-04	Cover 3045 & 4545	1	30	HL-20	Spring 3045 x 7 Pcs, 4545 x 8 Pcs 4560 x 9 Pcs, 6080 x 12 Pcs.	
	HL-04B	Cover 4560	1				
	HL-04C	Cover 6080	1	31	H-17	Lid 3045 4545&4560x2 Pcs, 6080 x 8 Pcs	
5	HL-05	Aluminum Bracket 450 mm 4545 & 4560	1	32	HL-21	Shaft 3045 4545 & 6080	1
	HL-05A	Aluminum Bracket 300 mm 3045	1		HL-21A	Shaft 4560	1
	HL-05B	Aluminum Bracket 600 mm 6080	1	33	HL-22	P. E. Lid	2
5-1	HL-05	Aluminum Bracket 450 mm 3045 & 4545	1	34	HL-23	Stainless Roller 3045 4545 & 6080	1
	HL-05B	Aluminum Bracket 600 mm 4560	1		HL-23A	Stainless Roller 4560	1
	HL-05C	Aluminum Bracket 800 mm 6080	1	35	H-26	Rubber Mat 3045 & 4545 x 4 Pcs 4560 x 6 Pcs, 6080 x 8 Pcs.	
6	HL-06	Ceramics 3045 x 25 Pcs, 4545 x 30 Pcs. 4560 x 35 Pcs, 6080 x 47 Pcs.		36	L-17	PCB Bushing	4
7	HL-07	Flame Retardant 15 mm	1 Rol.	37	E-12A / B	P.C. Board 110V/230V 3045,4545 & 4560	1
8	HL-08	Heating Wire 4545	1		E-12C / D	P.C. Board 110V / 230V 6080	1
	HL-08C	Heating Wire 3045	1	38	E-13A / B	Transformer 110V / 230V 4545	1
	HL-08A	Heating Wire 4560	1		E-13E / F	Transformer 110V / 230V 4560	1
	HL-08B	Heating Wire 6080	1		E-13C / D	Transformer 110V / 230 V 6080	1
9	HL-09	Hook	1		E-13G / H	Transformer 110V / 230 V 3045	1
10	H-25	Hook	1	39	E-03	Micro Switch	1
11	H-24	Plate	2	40	E-14	Strain Relief Bushing	1
12	H-23	Bushing	2	41	E-04	Power Cord	1
13	H-22	Spring	2	42	E-05	Fuse Holder	1
14	H-21	Cover	1	43	E-06	Fuse 110V x 15A, 220-240V x 10 A	1
15	HL-10	Bushing	1	44	E-07	Variable Resistor	1
16	HL-11	Bushing	1	45	E-08A / B	Lamp 110V / 230V	1
17	HL-12	Copper Turning	1	46	E-09	Knob	1
18	H-14	Shaft	2	47	E-10	Power Switch	1
19	HL-13	Bracket	3	48	S-04	Screw M4 x 25	3
20	HL-14	Bracket	1	49	S-53	Washer M4	11
21	H-13	Plate	1	50	S-07	Nut M4	27
22	H-10	Plate	1	51	S-27	Cap Lock Nut M4	8
23	HL-15	Spring 3045 4545 & 4560 x 4 Pcs, 6080 x 8 Pcs		52	S-28	Screw M4 x 45	8
				53	S-03	Screw M4 x 15	16
24	HL-16	Sealing Arm 4545	1	54	S-01	Screw M4 x 6	32
	HL-16A	Sealing Arm 3045	1	55	S-02	Screw M4 x 10	1
	HL-16B	Sealing Arm 4560	1	56	S-17	Screw M5 x 10	4
	HL-16C	Sealing Arm 6080	1	57	S-09	Screw M5 x 10	6
25	HL-17	Silicon Bracket 415 mm 3045 & 4545	1	58	S-11	Spring Washer M5	18
	HL-17A	Silicon Bracket 615 mm 4560	1	59	S-12	Washer M5	34
	HL-17B	Silicon Bracket 815 mm 6080	1	60	S-10	Screw M5 x 12	8
				61	S-29	E-Shaft E-8	2
				62	S-26	Nut M5	4