

**CHARACTERISTIC:**

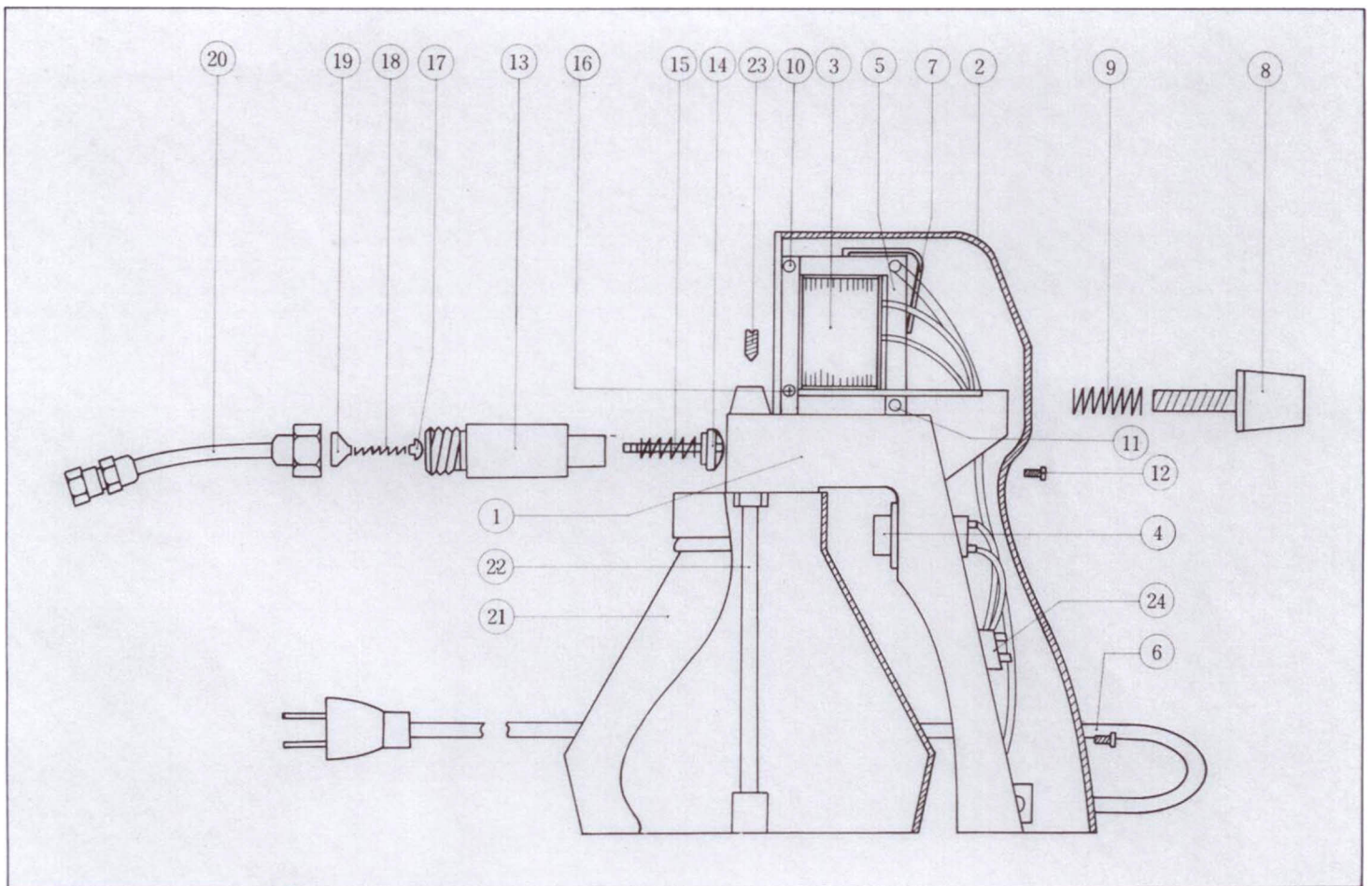
"YH120 **RED-ARROW** SPRAY GUN" the lightest weight of 1.2kg, is designed in accordance with vacuum theory with strong function to clean any dirt. When using, the strong pressure will come out directly from bendable nozzle head, no any air-compressor is needed. The usage is simple and convenient. The results would be better, if you use I.I.I. TRICHLOROETHANE or general cleaning liquid of solvent.

**APPLICATION:**

It is suitable for cleaning the dirt out of knitting clothes, garments, suits and machineries.

**USAGE AND MAINTENANCE:**

1. The proper spot removal by "shotting" the dirt out of the dirty subject should be carried out in a circular sweep, working from the outside towards the centre.
2. The correct clearance from nozzle to dirty surface generally varies from 5—20cm. Bear in mind that the distance also alters by density and thickness of dirty subject (example: fabric).
3. The screw-button at the back side of the gun is used to control the pressure; turn to left strong, turn to right weak (the liquid sprayed out is fewer).
4. For extending the life of spray gun and not affecting the working efficiency of your company, please maintain your spray gun by just several minutes after using. Firstly, please spray rest liquid out, then take off piston No. 14 and drop little nourish oil on it.
5. If the spray gun is out of order, please detach and examine it according to the drawing. If for the sake of oxidization, please remove it by using deoxidization paste, then drop little nourish oil on it. If for the sake of damage of parts, we can supply all parts at reasonable price. Please indicate us the part No., we assure you of our best service at all times.



- |                         |                             |                              |
|-------------------------|-----------------------------|------------------------------|
| 1. Gun housing.         | 9. Volume control spring.   | 17. Delivery valve cone.     |
| 2. Gun housing cover.   | 10. Bolt A.                 | 18. Delivery valve spring.   |
| 3. Electric drive unit. | 11. Bolt B.                 | 19. Swirl head.              |
| 4. Trigger switch.      | 12. Gun unit locking screw. | 20. Bendable nozzle head.    |
| 5. Vibrating plate.     | 13. Pump cylinder.          | 21. Cup.                     |
| 6. Electric lead.       | 14. Piston.                 | 22. Suction pipe.            |
| 7. Plate.               | 15. Piston spring.          | 23. Pump unit locking screw. |
| 8. Volume control knob. | 16. Gun unit fitting plate. | 24. Terminal block.          |

- |       |       |         |        |         |         |
|-------|-------|---------|--------|---------|---------|
| ①噴槍主體 | ⑤矽鋼工片 | ⑨後調彈簧   | ⑬汽缸    | ⑰ ⑱ ⑲   | ⑳吸管     |
| ②主體蓋  | ⑥電線   | ⑩叉銷A    | ⑭前擊槓   | 分水活塞    | ㉓汽缸固定螺絲 |
| ③馬達   | ⑦彈片   | ⑪叉銷B    | ⑮大彈簧   | ㉔長形可彎噴嘴 | ㉕接線板    |
| ④開關   | ⑧後調帽  | ⑫槍體固定螺絲 | ⑯槍體固定片 | ㉖油壺     |         |